



Install & Remove Titration Rods on Panthera D-SAD

Replacing Titration Rods on the Panthera D-SAD is a straightforward process, however some practice would be helpful.

The pins on the Panthera Titration Rods are sturdy, and are specifically designed to **not** come off easily, so it can take some twisting and prying to remove them (after they are properly aligned, of course).

1. Start on the upper.

Pin is shown in normal position, before removal.

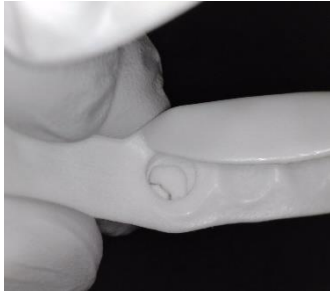
Note: this connection is designed to **not** come apart easily.



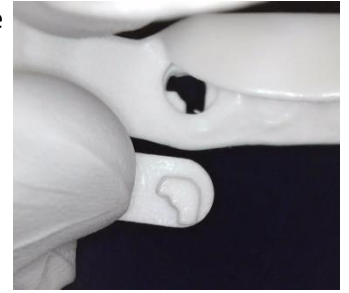
2. Rotate the appliance 180° . . .



3. . . until the triangle of the rods line up with the shape of the anchor hole in the appliance.



4. Pull on the rod to remove it from the appliance.



5. Repeat on the other side and lower arch.



6. To insert the rods,

Reverse the rod removal process.

It can be helpful to gently compress the lower arch inward when installing the rods.

7. **IMPORTANT:** ensure the printed arm lengths are facing inward to avoid cheek irritation.

There is no “left” or “right” rods – both sides are the same.

