



**Klausz Dental  
Laboratories Ltd.**

Working **harder and smarter** for your practice!

www.klauszdentallab.com • klauszdl@uniserve.com • Tel: 416-630-6262 • 1-800-410-4392  
40 Kodiak Crescent • Units 11-12 • Toronto, ON • Canada M3J 3G5

**FALL 2018**

**INSIDE THIS ISSUE**

- 1** We've Grown Into An O.I.C.S. Laboratory
- 1** Panthera D-SAD  
-Preferred Partner Laboratory
- 2** Anterior Aesthetics - Case  
Courtesy of Dr. Ron Goodlin
- 3** Anterior Aesthetics - Case  
Courtesy of Dr. Jennifer Lai
- 3** Welcome to Our Team!  
Camelia Teodora Moldovan,  
R.D.T.
- 4** A Simple To Use At Home  
Sleep Test - BresDX
- 4** Look For Us At Upcoming  
Meetings & Events

## "We Build Advanced Occlusal Concepts Into Everything We Do!"

### We've grown into an O.I.C.S. Laboratory!

At **Klausz Dental Laboratories**, we are committed to providing our clients with a full range of services, restorations, and appliances to meet all aspects of clinical dentistry. To meet your expectations we have grown into an **Occlusal-Implant-Cosmetic-Sleep (O.I.C.S.) Specialty Laboratory** and we have solidified our position as a leader in these fields through various certifications.

With 50 years of experience in the dental technology field, we build advanced occlusal concepts into every restoration and appliance we custom fabricate. It's with a greater understanding of how teeth, muscles and joints work together that we can create restorations that not only look lifelike and aesthetic, but can last longer and function better. Allow us to apply the knowledge we've accumulated into your next restoration or appliance. See why we've become an **O.I.C.S. Specialty Laboratory**.



Klausz Dental Laboratories is proud to announce that we have become one of only five dental laboratories in Canada to have earned the privilege of being a Panthera Preferred Partner Laboratory. We would like to thank all of our clients who have helped make this possible and we look forward to continuously "working harder and smarter" to earn your trust.

## Anterior Aesthetics by Klausz Dental Labs Case Courtesy of Dr. Ron Goodlin, Arora, Ontario



*"I know the technicians at Klausz Dental Lab are perfectionists – each case is studied with careful attention to detail. From case design, to fabrication, and onto the final quality check before it leaves the lab, every detail is examined. Restorations insert with ease, with minimal adjustments needed, and the aesthetics are beautiful. I really appreciate all they do for me and my patients."*

*- Dr. Ron Goodlin*



The patient, who is in the dental field, presented with stained, discolored, and chipped anterior teeth. The previously restored bonding and veneers to close diastemas were failing due to occlusal forces and so our patient was not happy with her smile and was feeling self-conscious.

We determined that a combination of increased tooth length to restore the occlusal guidance, provide improved proportionality, and aesthetics using the most minimally invasive approach would result in an improved situation according to the challenging pre-operative condition.

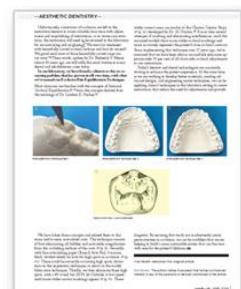
Following several weeks of a trial smile in provisional restorations, ultra thin porcelain veneers were fabricated for the maxillary six anterior teeth using the refractory die method. When the patient is ready, future additional restorations to build out the buccal corridor will be undertaken.

The smile aesthetic due to the new shape, colour and incisal length of the teeth was greatly improved and the patient is thrilled with the final results.

### Would You Like to Reduce Your Chair Side Occlusal Adjustments by 95%?

If So, Be Sure to Read Ron Klausz's Latest Article Which Was Published in the April 2018 Oral Health Journal

[www.klauszdentallab.com/index.cfm/2018-May-June.cfm](http://www.klauszdentallab.com/index.cfm/2018-May-June.cfm)



## Anterior Aesthetics by Klausz Dental Labs Case Courtesy of Dr. Jennifer Lai, Toronto, Ontario



*"We use a premium dental lab. Ron and his team of technicians are artists when it comes to fabricating custom dental smiles. They provide nothing but perfection in all the cases we have sent to them - none have been returned for revision. They are that good!"*

*- Dr. Jennifer Lai*



The patient is a young professional. He's starting to establish a healthy career but has felt self-conscious about his smile. His 4 anterior teeth were prepared and e.Max crowns were fabricated for 12, 11, and 21 and an e.Max veneer was fabricated for 22. Now he has the biggest smile. He wears his new investment with excitement. As a side note: you should have seen him at his post-op appointment, his smile was so big it was like he was flashing his teeth. It was awesome!

---

## Welcome to our Team! Camelia Teodora Moldovan, R.D.T.

We are so excited to announce a new member of our team! Camelia Teodora Moldovan, R.D.T. has joined Klausz Dental Lab, bringing with her an extensive knowledge of dental ceramics and aesthetics.

Camelia graduated from the Dental Technology College in Romania in 1988, and started practicing right after. Five years later, she came to Canada and worked as a Ceramist and Crown and Bridge Supervisor. After becoming a Registered Dental Technologist in Ontario in 1998, she became a business partner in a very successful dental laboratory in Ontario.



Her love for art and her commitment to providing patients with beautiful smiles are always a priority in her everyday work. She has a special interest in shade selection and characterization that is reflected in every case. Camelia brings a new energy and a fresh approach to our lab and we are delighted to welcome her as a member of our team.



## A Simple to Use Home Sleep Test Now Available from Klausz Dental Lab

We have come across a very interesting company with a simple-to-use, cost-effective, and disposable home sleep test. It was developed here in Toronto at the Toronto Rehab Institute under the MARS project. The company is called Bresotec and their home sleep testing unit is called the BresodX.

The BresodX is a personal, cordless device that is worn over the nose and mouth and captures multiple data streams by using two channels: a microphone and an accelerometer. The device can be used up to six times by the same user with purchase of extra Re-Use Kits.

The process is simple. Once the patient has slept with the unit on, the Micro SD card is removed, loaded into the card reader, and the information is uploaded through Bresotec's website. In less than 10 minutes a detailed report is generated and is accessible through the secure web portal.

We are proud to be one of the first dental laboratories to offer their clients information on the new BresodX home sleep testing unit. If you are considering expanding your practice into the field of dental sleep, Bresotec and Klausz Dental Lab would like to help ensure your success.

To help make it more convenient to provide your patients with this simple-to-use testing system, you can now order a BresodX, as well as Re-Use Kits, when you prescribe any sleep apnea device through us.

Call the lab for more details.

# Bresotec

**Engineering Sleep.  
Advancing Health.**



## Look For Us at These Upcoming Meetings & Events



**Sleep Disorders Dentistry**  
2018-2019 CE Season  
[www.SleepDisordersDentistry.com](http://www.SleepDisordersDentistry.com)



**Leading the TMD and Dental  
Sleep Medicine Community**

**11th Clinical Symposium**  
October 26<sup>th</sup> & 27<sup>th</sup>, 2018  
[www.aacpcanada.org](http://www.aacpcanada.org)



**4th Annual Conference**  
November 9<sup>th</sup> & 10<sup>th</sup>, 2018  
[www.cacsdd.org](http://www.cacsdd.org)

Mark Your Calendars - Our 2<sup>nd</sup> Annual Aqualizer Sale will once again be held in November

