



**Klausz Dental
Laboratories Ltd.**

Working **harder and smarter** for your practice!

www.klauszdentallab.com • klauszdl@uniserve.com • Tel: 416-630-6262 • 1-800-410-4392
40 Kodiak Crescent • Units 11-12 • Toronto, ON • Canada M3J 3G5

"We Build Advanced Occlusal Concepts Into Everything We Do!"

SPRING 2019

INSIDE THIS ISSUE

- 1 We've Grown Into An O.I.C.S. Laboratory
- 1 Klausz Dental Laboratories is Proud to Offer IPS e.Max Press Restorations
- 2 Prepare for Success with Flexible Clearance Tabs
- 3 Anterior Aesthetics - Case Courtesy of Dr. Jennifer Lai
- 4 Minimally Invasive Veneer Hands-on Course with -Dr. Ron Goodlin

We've grown into an O.I.C.S. Laboratory!

At **Klausz Dental Laboratories**, we are committed to providing our clients with a full range of services, restorations, and appliances to meet all aspects of clinical dentistry. To meet your expectations, we have grown into an **Occlusal-Implant-Cosmetic-Sleep (O.I.C.S.) Specialty Laboratory** and we have solidified our position as a leader in these fields through various certifications.

With 50 years of experience in the dental technology field, we build advanced occlusal concepts into every restoration and appliance we custom fabricate. It's with a greater understanding of how teeth, muscles and joints work together that we can create restorations that not only look lifelike and aesthetic, but can last longer and function better. Allow us to apply the knowledge we've accumulated into your next restoration or appliance. See why we've become an **O.I.C.S. Specialty Laboratory**.

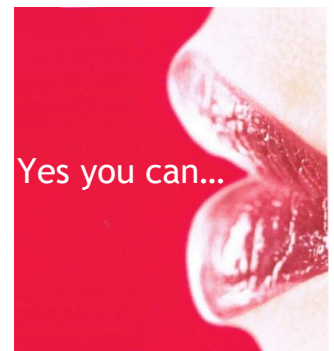
Klausz Dental Laboratories is proud to offer....

IPS e.max[®] Press

Comprised of biocompatible lithium disilicate, IPS e.max Press provides the fit, form and function of a pressed ceramic with maximum aesthetic characteristics, and exceptional flexural strength at 400 MPa.

IPS e.max Press ingots are available in varying degrees of translucency for maximum versatility. Due to their high strength, the restorations can be conventionally cemented. Alternatively, they can be adhesively bonded. This provides maximum flexibility to address clinical needs.

IPS e.max restorations are available in two forms. You can choose full contour that provides high strength and beautiful aesthetics as an alternative to zirconia and precious metal. For more aesthetically demanding cases, we can fabricate restorations utilizing the cut-back and build-up technique. Final veneering with IPS e.max Ceram, a proprietary nano-fluorapatite layering ceramic, offers unparalleled aesthetics.



We are confident that we can provide you with the high quality you have come to expect from our laboratory in these versatile all-ceramic restorations.

Prepare For Success... With Flexible Clearance Tabs

We would like to make it easier for our clients to ensure they are creating sufficient occlusal and interproximal tooth preparation clearance for today's more aesthetic restorations. We have come across a very simple and inexpensive product known as **Flexible Clearance Tabs**.

Each colour coded **Flexible Clearance Tab** is made to a specific thickness and is used like a feeler gauge to check preparation dimensions. The tabs are available in three thicknesses, from 1mm pink tabs (Kerr PN 004-006), 1.5mm green tabs (Kerr PN 004-007) to the 2.0mm blue tabs (Kerr PN 004-008). When the tab is drawn between a prepared tooth and its opposing occlusal surface or adjacent tooth, it will verify whether or not adequate clearance has been achieved.

If the tab resists being drawn through the space, there is less clearance than the thickness of the tab. By marking the tab with a Sharpie marker and testing the clearance, the ink will mark the tooth where more occlusal reduction is needed.

We would be pleased to provide you with a complimentary sample package to see for yourself how simple and effective these little tabs can be. If you would like to purchase **Flexible Clearance Tabs**, they are available through your regular dental sundries dealer.



Tips for use:

- 1 Trim the Tabs:** If the tab is too wide to achieve an accurate reading
- 2 Mark The Tab:** Use a sharpie marker to mark the tip of the tab
- 3 Position the tab:** Measure the space between the prep and opposing
- 4 Results:** The sharpie ink left on the prep reveals the reduction area



Finding simple solutions to everyday problems -
It's just another way we are, "Working Harder and Smarter for your Practice!"

Anterior Aesthetics by Klausz Dental Labs Case Courtesy of Dr. Jennifer Lai, Toronto, Ontario



"I have been working with Klausz Dental for over eight years now and this case is perfection. Ron and his team of technicians are artists when it comes to fabricating custom dental smiles. They provide nothing but perfection in all the cases we have sent to them - none have been returned for revision. They are that good!"

- Dr. Jennifer Lai, Toronto



A 41-year-old male patient presented with numerous oral health issues. When he was in his early twenties, these issues caused the loss of 8 posterior teeth and required heavy restorations to be placed on his maxillary anterior teeth. The patient has always been self-conscious about his smile and apprehensive towards dental treatment.

Through consultation with Ron at the lab, a diagnostic wax-up was created which provided the client with a clear picture of what his new custom smile would look like. Our client was now very excited to start the process. The restorations of choice were porcelain layered onto zirconia for aesthetics and strength. We fabricated a four-unit bridge from the 13-16 and a three-unit bridge from the 25-27. Six single crowns were placed from the 12-24.

The patient was so happy with the final results; he wrote the following review online, "I'm so happy and overly pleased with the exemplary service provided to me. Now that the top restorations are complete, I'm actually excited and looking forward to getting the bottom started".

Minimally Invasive Veneers Hands-on Course with Dr. Ron Goodlin

Presented By Smiles First Academy
Sponsored By Klausz Dental Laboratories

Date: June 7, 2019

Location: 25 Royal Crest Court,
Unit #205, Markham, ON, L3R 9X4

Time: 8:00am - 3:30pm

Price: \$695+HST



COURSE DESCRIPTION

Are you tired of costly remakes? Are your veneers like a box of chocolates? You never know what you are going to get? Do you lack confidence in prepping and placing veneers? This program is designed to show you a systematic approach that will give you better and faster results, predictability and profitability. Join Dr. Ron Goodlin, the past President of the American Academy of Cosmetic Dentistry for a full day hands-on program that will change the way you do cosmetic dentistry forever!



Dr. Ron Goodlin

Course Objectives

- ✓ Learn the pitfalls to avoid when treatment planning cosmetic cases.
- ✓ Understand the concepts of occlusion and longevity of cosmetic cases.
- ✓ Understand the concepts of minimally invasive veneers.
- ✓ Learn how to co-diagnose with your patient, treatment plan and get almost 100% treatment plan acceptance.
- ✓ Learn how to prepare your patient for their cosmetic treatment.
- ✓ Learn how to prep and bond the teeth for maximum strength and durability of veneers.



www.smilesfirstacademy.com

For more information and to register on-line please visit:
www.smilesfirstacademy.com/live-learn/minimally-invasive-veneers

Working with others to provide our clients with the very best in Continuing Education, is just another way we are “Working Harder and Smarter for your Practice”