



**Klausz Dental  
Laboratories Ltd.**

Working **harder and smarter** for your practice!

www.klauszdentallab.com • klauszdl@uniserve.com • Tel: 416-630-6262 • 1-800-410-4392  
40 Kodiak Crescent • Units 11-12 • Toronto, ON • Canada M3J 3G5

## "We Build Advanced Occlusal Concepts Into Everything We Do!"

FALL 2021

### INSIDE THIS ISSUE

- 1** We've Grown into an O.I.C.S. Specialty Laboratory
- 1** Dental Orthotics to Meet Your Specific Needs
- 2** Panthera X3 - The Next Generation of Dorsal Fin Sleep Appliance
- 3** Creative Solutions - Case Courtesy of Dr. Lourdes Maqueira
- 4** Working with others to provide our clients with the very best in Continuing Education

### We've grown into an O.I.C.S. Specialty Laboratory!

At **Klausz Dental Laboratories**, we are committed to providing our clients with a full range of services, restorations, and appliances to meet all aspects of clinical dentistry. To meet your expectations we have grown into an **Occlusal-Implant-Cosmetic-Sleep (O.I.C.S.) Specialty Laboratory** and we have solidified our position as a leader in these fields through various certifications.

With over 50 years of experience in the dental technology field, we build advanced occlusal concepts into every restoration and appliance we custom fabricate. It's with a greater understanding of how teeth, muscles and joints work together that we can create restorations that not only look lifelike and aesthetic, but can last longer and function better. Allow us to apply the knowledge we've accumulated into your next restoration or appliance. See why we've become an **O.I.C.S. Specialty Laboratory**.

## Dental Orthotics to Meet Your Specific Needs

One of the fastest growing segments of study in dentistry today is in the treatment of T.M.J. Disorders, Orofacial Pain and Sleep Disorders. Klausz Dental Laboratories is proud of our involvement in providing dentists with guidance and educational opportunities in this developing field. We can custom fabricate a wide variety of dental orthotics, from nighttime anterior deprogrammers to daytime orthotics, following the protocol set out by many of the leading authorities in dentistry today.

We take great pride in not only meeting, but exceeding the expectations of our clients. We hope you will agree when you try our latest dental orthotics. If you have any questions about orthotics, please contact us.



Deprogrammers



Daytime Orthotics



Flat Plane Splints

## Klausz Dental Laboratories is Thrilled to Announce the Launch of the New Panthera X3 Sleep Appliance

### The Next Generation of Dorsal Fin Sleep Appliance



Dorsal Fin Sleep Appliances have evolved into one of the most popular choices for snoring and obstructive sleep apnea. The two piece construction allows for maximum patient comfort and lateral jaw movement. The Dorsal fins on the mandibular appliance interface with inclines built into the facial of the upper appliance to dictate a specific mandibular position. The device is fabricated with an easy to change “Clip System” which allows for further mandibular advancement. The device takes into account each patient’s particularities and offers better adaptation, which diminishes discomfort and increases stability.



Looking for innovative ideas, is just another way we are,  
“Working Harder and Smarter for your Practice!”

We’ve Updated Our Website to Serve You Better  
Your portal to all that’s new and exciting in dental technology



[www.klauszdentallab.com](http://www.klauszdentallab.com)



## Creative Solutions by Klausz Dental Laboratories

### Case Courtesy of Dr. Lourdes Maqueira, Toronto, Ontario



*"We use a premium dental lab. Ron and his team of technicians are artists when it comes to fabricating custom dental smiles. With their experience, over the past 5 years of working together, we have been able to provide my patients with great outcomes that provide function with aesthetics."*

*Dr. Lourdes Maqueira*

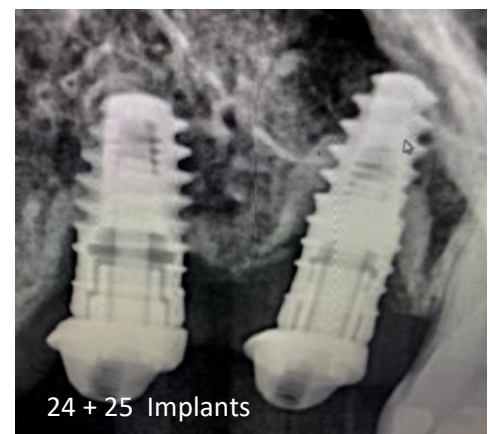
The patient presented with partial dentitions in both the maxillary and mandibular arches. The maxillary arch had 4 implants placed in Europe, with different abutments, and all were severely misaligned to each other. After evaluating the implant placement, the bone surrounding the implants and the angulation issue, it was determined the most optimal choice for success was with removable prosthetics. Using x-rays, we were able to determine the implants that were placed and the types of abutments that were covering them. The implant in the 17 position could not be identified; however it had a Locator Abutment that we were able to utilize. The implant in the 14 position was identified as a Zimmer Implant which had some type of healing cap, that could not be identified, and standard screw driver tips would not engage, so a custom screw driver was made at the lab to facilitate the healing cap removal. In tooth positions 24 and 25 Zimmer Implants were identified, both of which had angled stock abutments. The sizes of the implants in the 14, 24, and 25 positions were determined and an implant level impression was taken using Closed Tray Impression Copings, including a Locator Impression Cap for the implant in the 17 position.



17 Implant



14 Implant



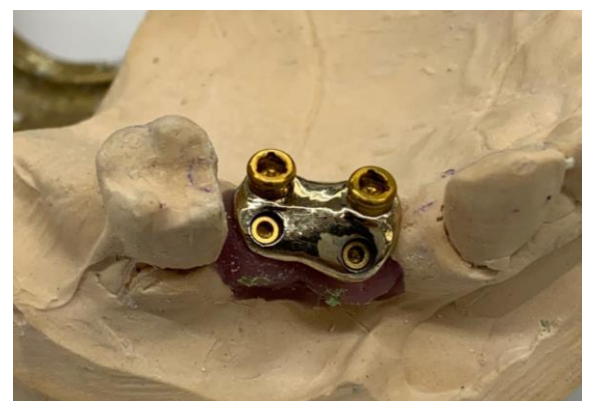
24 + 25 Implants



Custom Locator Abutments



14 Custom Locator Abutment



24 + 25 Custom Locator Abutments

Continued from previous page



Panoramic X-Ray of Implant Position



Locator Abutments Intra-Oral



Completed Maxillary Denture



Completed Mandibular Denture



Internal View of Dentures

In the lab, Custom Locator Abutments were fabricated to be parallel with the Locator Abutment in the 17 position. It was decided that the implants in the 24 and 25 positions should be splinted together due to the amount of bone loss and the quality of the remaining bone in the area. Cast partial dentures were fabricated for both arches to replace the missing teeth and Novaloc Inserts were included to engage all four of the Locator Abutments in the maxillary denture for enhanced retention.

The patient was thrilled with the final results.

Helping our clients achieve the very best clinical outcomes, is just another way we are,  
 "Working Harder and Smarter for your Practice!"



Sleep Disorders Dentistry

"Snoring & Sleep Apnea Solutions"

Laboratory Sponsor

[www.SleepDisordersDentistry.com](http://www.SleepDisordersDentistry.com)

Working with others to provide our clients with the very best in Continuing Education is just another way we are, "Working Harder and Smarter for your Practice!"



SMILES FIRST  
ACADEMY

Laboratory Sponsor

[www.smilesfirstacademy.com](http://www.smilesfirstacademy.com)