



**Klausz Dental
Laboratories Ltd.**

Working **harder and smarter** for your practice!

www.klauszdentallab.com • klauszdl@uniserve.com • Tel: 416-630-6262 • 1-800-410-4392
40 Kodiak Crescent • Units 11-12 • Toronto, ON • Canada M3J 3G5

"We Build Advanced Occlusal Concepts Into Everything We Do!"

SPRING 2024

INSIDE THIS ISSUE

- 1** We've Grown into an O.I.C.S. Specialty Laboratory
- 1** IPS e.Max Press – Lithium Disilicate Ceramics
- 2** The Hidden Clasp Cast Partial Denture
- 3** Anterior Aesthetics - Case
Courtesy of Dr. Daniel Schwartzberg
- 3** Implant Tips – Making Abutment Insertion a Snap
- 4** Not All Occlusal Splints Are Created Equally

We've grown into an O.I.C.S. Specialty Laboratory!

At **Klausz Dental Laboratories**, we are committed to providing our clients with a full range of services, restorations, and appliances to meet all aspects of clinical dentistry. To meet your expectations we have grown into an **Occlusal-Implant-Cosmetic-Sleep (O.I.C.S.) Specialty Laboratory** and we have solidified our position as a leader in these fields through various certifications.

With over 50 years of experience in the dental technology field, we build advanced occlusal concepts into every restoration and appliance we custom fabricate. It's with a greater understanding of how teeth, muscles and joints work together that we can create restorations that not only look lifelike and aesthetic, but can last longer and function better. Allow us to apply the knowledge we've accumulated into your next restoration or appliance. See why we've become an **O.I.C.S. Specialty Laboratory**.

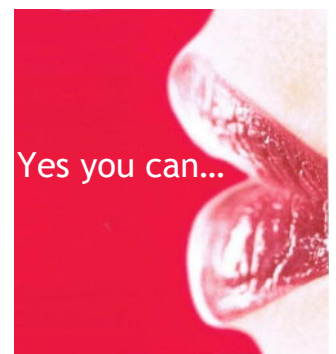
Klausz Dental Laboratories is proud to offer....

IPS e.max[®] Press

Comprised of biocompatible lithium disilicate, IPS e.max Press provides the fit, form and function of a pressed ceramic with maximum aesthetic characteristics, and exceptional flexural strength at 400 MPa.

IPS e.max Press ingots are available in varying degrees of translucency for maximum versatility. Due to their high strength, the restorations can be conventionally cemented. Alternatively, they can be adhesively bonded. This provides maximum flexibility to address clinical needs.

IPS e.max restorations are available in two forms. You can choose full contour that provides high strength and beautiful aesthetics as an alternative to zirconia and precious metal. For more aesthetically demanding cases, we can fabricate restorations utilizing the cut-back and build-up technique. Final veneering with IPS e.max Ceram, a proprietary nano-fluorapatite layering ceramic, offers unparalleled aesthetics.



The Hidden Clasp Cast Partial Denture

Klausz Dental Lab's vast experience in the field of removable cosmetic dentistry enables us to offer outstanding cast partial solutions. The key to providing superior cast partial solutions lies in the materials used and in the design of the partial. Our extensive experience has led us to use the finest materials and enabled us to develop highly efficient design techniques.



For many decades, cast partial dentures have been the method of choice when it came to the rehabilitation of the partially edentulous patient. Cast partials can be made from a variety of materials to match the needs of each individual patient. Dental gold and chromium cobalt have been the standard materials of choice, however, newer, lightweight and more biocompatible metals, such as titanium alloys are now available.



Just as important as the material, is the design of the partial. Not only must the partial fit and function, but it should also provide support to the teeth it is utilizing, as well as be aesthetically pleasing. With our extensive experience in the field of removable cosmetic dentistry, we have come to favor the "**Hidden Clasp Cast Partial Denture Design**". It is highly effective in protecting, preserving and strengthening the abutment teeth. It is both retentive and stable, and designed to provide the patient with complete comfort. The fact that the clasps are hidden is an aesthetic feature that most patients will appreciate.

We Continue to Update Our Website to Serve You Better
Your portal to all that's new and exciting in dental technology

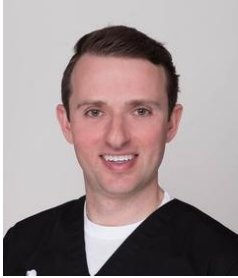


www.klauszdentallab.com



Anterior Aesthetics by Klausz Dental Laboratories

Case Courtesy of Dr. Daniel Schwartzberg, Toronto, Ontario



“Ron and his team of technicians are artists when it comes to fabricating custom dental smiles. It is a pleasure working with them, as our goals of providing excellent quality and service to my patients are well aligned. They empower me with the confidence to take on more challenging cases. With their experience, I have been able to provide my patients with great outcomes.”

Dr. Daniel Schwartzberg

The patient presented with old porcelain fused to metal crowns over custom cast abutments secured to implants for teeth 12, 11, and 21 and a misshaped and discoloured lateral incisor on tooth 22. He wanted to improve on the aesthetics of his smile. The supra gingival labial margins of the implant abutments were modified to place the margins slightly sub gingival and separate porcelain fused to zirconia crowns, with opaque cores, along with an e.Max layered veneer were fabricated to provide strength and aesthetics.



Before



Preps



After

Implant Tips

Make abutment insertion a snap with a custom orientation jig

Implant abutments fabricated in the dental laboratory, whether modified stock, custom cast, or milled need to be placed consistently in the same orientation. When the case is completed and sent to the dentist's office for final insertion, this orientation needs to be transferred from the stone cast to the implant intra-orally. To do this, a “**Custom Orientation Jig**” should be fabricated. These jigs are made with low shrinkage, pattern resin. They should fit snugly around the core of the abutment and the lateral extensions should rest on the adjacent teeth. They can be placed on the abutment while it is still seated on the model and taken from the model to the mouth (Figures 1, 2, 3, 4).

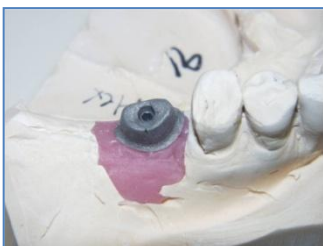


Figure 1



Figure 2



Figure 3



Figure 4

Not All Occlusal Splints Are Created Equally

At Klausz Dental Laboratories, we believe you and your patients deserve the best quality possible. That's why we choose to do things differently than most other labs.

Using the most advanced materials, we can ensure the fit, comfort, and longevity of the appliances we custom fabricate.

Replacing hard acrylic splints, that often times fit poorly because they shrink during polymerization, with Pressure Molding Technology (PMT) materials covered with composite resin, we can create appliances that not only fit better, but are also more biocompatible than traditional methyl methacrylate.

We can also fabricate appliances from thermoplastic materials that soften in a few seconds under warm water or in the oral environment. This material acts as a shock absorber for occlusal forces. We can fabricate the appliance entirely out of thermoplastic material or we can place the thermoplastic material only on the inside of the appliance with hard acrylic on the outer occlusal surface. This may help to reduce some of the stress or pressure patients experience with hard materials. And to satisfy their aesthetic demands, the appliances are available in a variety of colours.

There is nothing standard about today's "standard flat plane splints". Their designs can be modified in a great number of ways.



To learn more about what sets our occlusal splints apart from the competition, be sure to read Ron Klausz's article published in the June 2017 issue of Oral Health Journal available for download in the "Published Article Section" of our website.

<https://www.klauszdentallab.com/published-articles/>



Laboratory Sponsor

www.SleepDisordersDentistry.com

Working with others to provide our clients with the very best in Continuing Education is just another way we are, "Working Harder and Smarter for your Practice!"



Laboratory Sponsor

www.cacsdd.org